

Anti-TIMP-2 Antibody
Catalog # ABO10559**Specification**

Anti-TIMP-2 Antibody - Product Information

Application	IHC-P, E
Primary Accession	P16035
Host	Rabbit
Reactivity	Human, Mouse, Rat
Clonality	Polyclonal
Format	Lyophilized

Description

Rabbit IgG polyclonal antibody for Metalloproteinase inhibitor 2(TIMP2) detection. Tested with IHC-P, ELISA in Human;Mouse;Rat.

Reconstitution

Add 0.2ml of distilled water will yield a concentration of 500ug/ml.

Anti-TIMP-2 Antibody - Additional Information

Gene ID 7077

Other Names

Metalloproteinase inhibitor 2, CSC-21K, Tissue inhibitor of metalloproteinases 2, TIMP-2, TIMP2

Calculated MW

24399 MW KDa

Application Details

Immunohistochemistry(Paraffin-embedded Section), 0.5-1 µg/ml, Human, Mouse, Rat, By Heat
ELISA , 0.1-0.5 µg/ml, Human

Subcellular Localization

Secreted.

Protein Name

Metalloproteinase inhibitor 2

Contents

Each vial contains 5mg BSA, 0.9mg NaCl, 0.2mg Na₂HPO₄, 0.05mg Thimerosal, 0.05mg NaN₃.

Immunogen

A synthetic peptide corresponding to a sequence at the C-terminus of human TIMP2(205-220aa RGAAPPKQEFLDIEDP), identical to the related mouse and rat sequences.

Purification

Immunogen affinity purified.

Cross Reactivity

No cross reactivity with other proteins

Storage

At -20°C for one year. After reconstitution, at 4°C for one month. It can also be aliquotted and stored frozen at -20°C for a longer time. Avoid repeated freezing and thawing.

Sequence Similarities

Belongs to the protease inhibitor I35 (TIMP) family.

Anti-TIMP-2 Antibody - Protein Information

Name TIMP2

Function

Complexes with metalloproteinases (such as collagenases) and irreversibly inactivates them by binding to their catalytic zinc cofactor. Known to act on MMP-1, MMP-2, MMP-3, MMP-7, MMP-8, MMP-9, MMP-10, MMP-13, MMP-14, MMP-15, MMP-16 and MMP-19.

Cellular Location

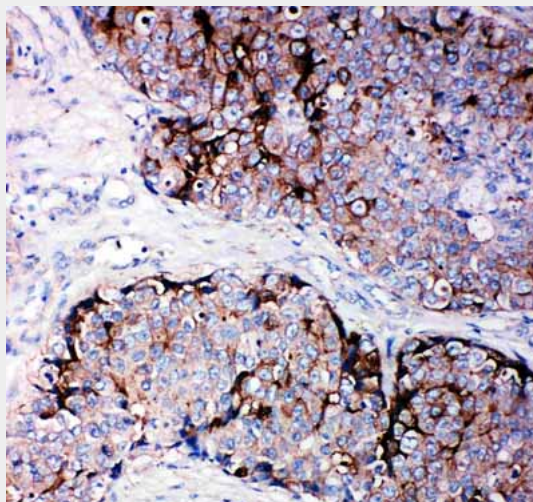
Secreted.

Anti-TIMP-2 Antibody - Protocols

Provided below are standard protocols that you may find useful for product applications.

- [Western Blot](#)
- [Blocking Peptides](#)
- [Dot Blot](#)
- [Immunohistochemistry](#)
- [Immunofluorescence](#)
- [Immunoprecipitation](#)
- [Flow Cytometry](#)
- [Cell Culture](#)

Anti-TIMP-2 Antibody - Images



Anti-TIMP2 antibody, ABO10559, IHC(P)IHC(P): Human Mammary Cancer Tissue

Anti-TIMP-2 Antibody - Background

TIMP metalloproteinase inhibitor 2, a tissue inhibitor of metalloproteinases, also known as TIMP2, is a human gene, thought to be a metastasis suppressor. This gene is a member of the TIMP gene family. The proteins encoded by this gene family are natural inhibitors of the matrix metalloproteinases, a group of peptidases involved in degradation of the extracellular matrix. In addition to an inhibitory role against metalloproteinases, the encoded protein has a unique role among TIMP family members in its ability to directly suppress the proliferation of endothelial cells. As a result, the encoded protein may be critical to the maintenance of tissue homeostasis by suppressing the proliferation of quiescent tissues in response to angiogenic factors, and by inhibiting protease activity in tissues undergoing remodelling of the extracellular matrix.